

# *Powerful wetting* No-clean Solder Paste

## SE48-M1000-3 & SS48-M1000-3

### ■ Feature

- 1) Realizes super powerful wetting and ensures extremely reliable solder joints, even if components have marginal solderability, and may eliminate the need for the use of a nitrogen atmosphere.
- 2) Ensures outstanding continual printing with fine pitch (0.5mm/20mil) and even super fine pitch (0.4mm/16mil) applications.
- 3) Carefully selected thixotropic materials ensure excellent slump resistance and significantly reduce the occurrence of bridging and solder beading.
- 4) Low color flux residue offers superior cosmetic appearance.
- 5) Conforms to Bellcore tests (copper mirror, halides, surface insulation resistance, electromigration) GR-78-CORE, Issue 1.

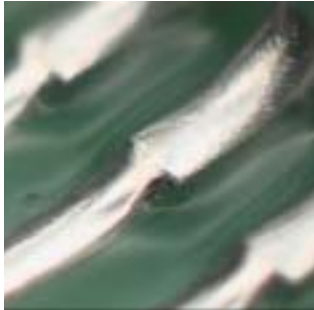
### ■ Specifications

Application		Printing - Stencil	
Products		<b>SE48-M1000-3 (SS48-M1000-3)</b>	
Alloy	Composition (%)	Sn63, Pb37 (Sn62, Pb36, Ag2)	
	Shape	Spherical	
	Particle size (μm)	20 - 45	
Flux	Halide content (%)	0.0	
	Surface insulation resistance *1	Initial value (Ω)	$> 1 \times 10^{12}$
		After humidification (Ω)	$> 1 \times 10^{11}$
	Aqueous solution resistivity*2 (Ωcm)	$> 2 \times 10^4$	
Flux type	ROL0		
Product	Flux content (%)	10 ± 0.5	
	Viscosity*3 (Ps)	1900 ± 10%	
	Copper plate corrosion*4	Passed	
	Solder spread factor (%)	90	
	Tack time	> 24 hours	
	Shelf life (below 10°C)	6 months	

1. SIR .....40°C×90%RH×96Hr
2. Aqueous solution resistivity .....In accordance with MIL specifications.
3. Viscosity.....Malcom spiral type viscometer, PCU-2 at 25°C 10rpm
4. Copper plate corrosion .....In accordance with JIS.



■ **Wetting** (0.65mm pitch QFP with 42-Alloy; Ni/Fe base lead wire)

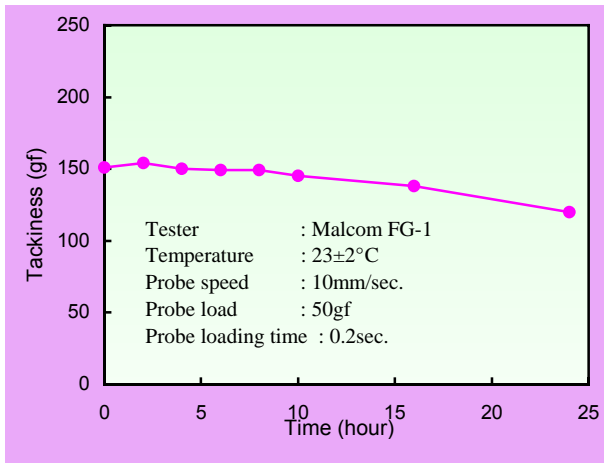


SS48-M1000-3

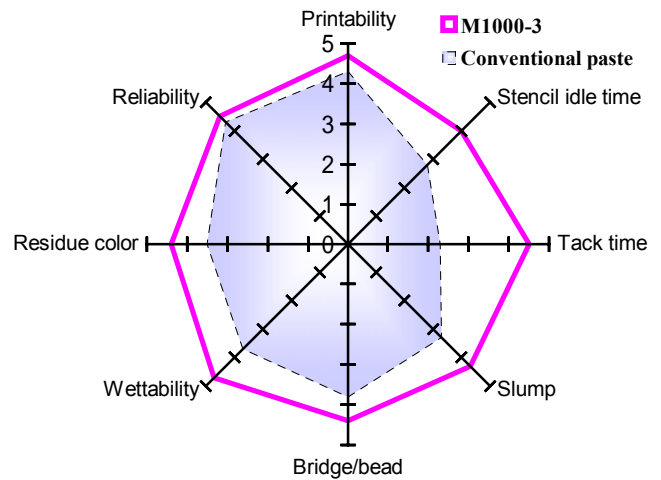


Conventional halide free solder paste

■ **Tackiness**

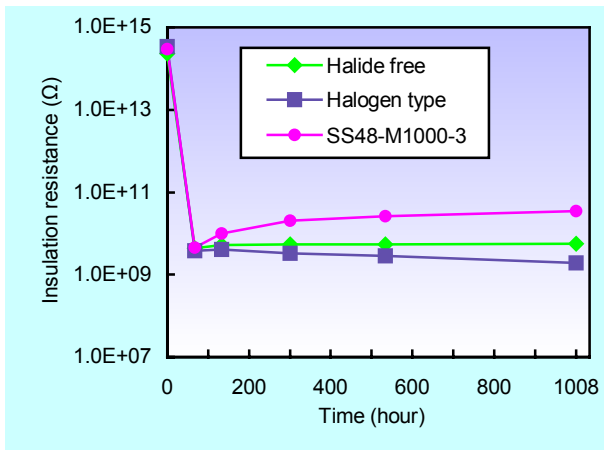


■ **Features comparison** (0: Bad → 5: Good)

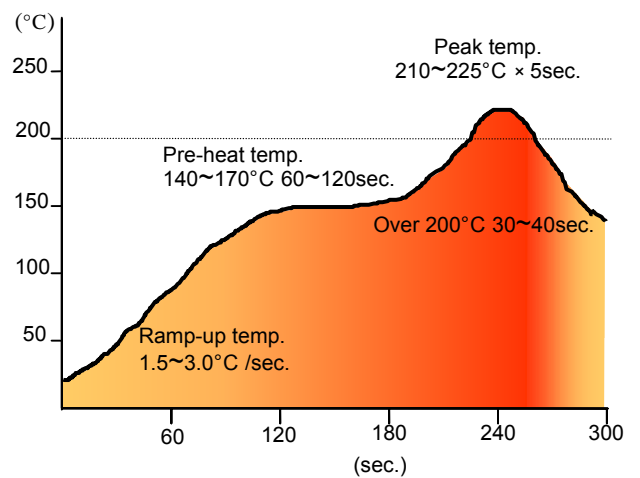


■ **Voltage applied insulation resistance**

(85%RH×85°C; Voltage applied 100V)



■ **Recommended reflow profile**



**KOKI COMPANY LIMITED**

32-1, Senju Asahi-cho, Adachi-ku, Tokyo 120-0026

Tel : (03) 5244-1521 Fax : (03) 5244-1527 www.ko-ki.co.jp